

DCAF13 Antibody

Cat No.: SJ-AB2740

Applications

Reactive Species

Human, Mouse, Rat

Positive Samples

Refer to Validation Data.

Validated Applications

WB, IHC, IP

Recommended Dilution

WB 1:1000-1:2000

IHC 1:100-1:200

IP 1:20-1:50

Product Information

Antibody Type

Recombinant Rabbit mAb

Immunogen

A synthesized peptide derived from human DCAF13.

Modification

Unmodified

Isotype

Rabbit IgG

Clone No.

N/A

Purification Method

Affinity purification

Form

Liquid

Storage Buffer

Rabbit IgG in 10mM phosphate buffered saline, pH 7.4, 150mM sodium chloride, 0.05% BSA, 0.02% sodium azide and 50% glycerol.

Storage Conditions

Store at +4°C for short term. Store at -20°C for long term. Avoid freeze/thaw cycle.

Host

Rabbit

Clonality

Monoclonal

Conjugation

Unconjugated

Concentration

N/A

Background Information

Function

Part of the small subunit (SSU) processome, first precursor of the small eukaryotic ribosomal subunit. During the assembly of the SSU processome in the nucleolus, many ribosome biogenesis factors, an RNA chaperone and ribosomal proteins associate with the nascent pre-rRNA and work in concert to generate RNA folding, modifications, rearrangements and cleavage as well as targeted degradation of pre-ribosomal RNA by the RNA exosome.

UniProt ID

Q9NV06

Organism

Human

Recommended Name

N/A

Short Name

N/A

Alternative Names

DCAF13; DDB1 and CUL4 associated factor 13; GM83; HSPC064; WD repeat and SOF domain-containing protein 1; WDSOF1;

Gene ID

N/A

Gene Name

N/A

Calculated MW

51 kDa

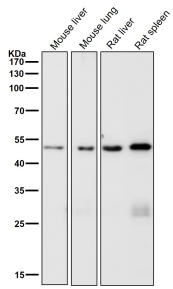
Observed MW

50 kDa

Subcellular Location

N/A

Validation Data



All lanes use the Antibody at 1:2K dilution for 1 hour at room temperature.

NOTICE: For research use only. Not for therapeutic or diagnostic purposes.

Contact

For technical support and original validation data for this product please contact:

T: 400-018-6916

E: support@sanjingbio.com

W: www.sanjingbio.com